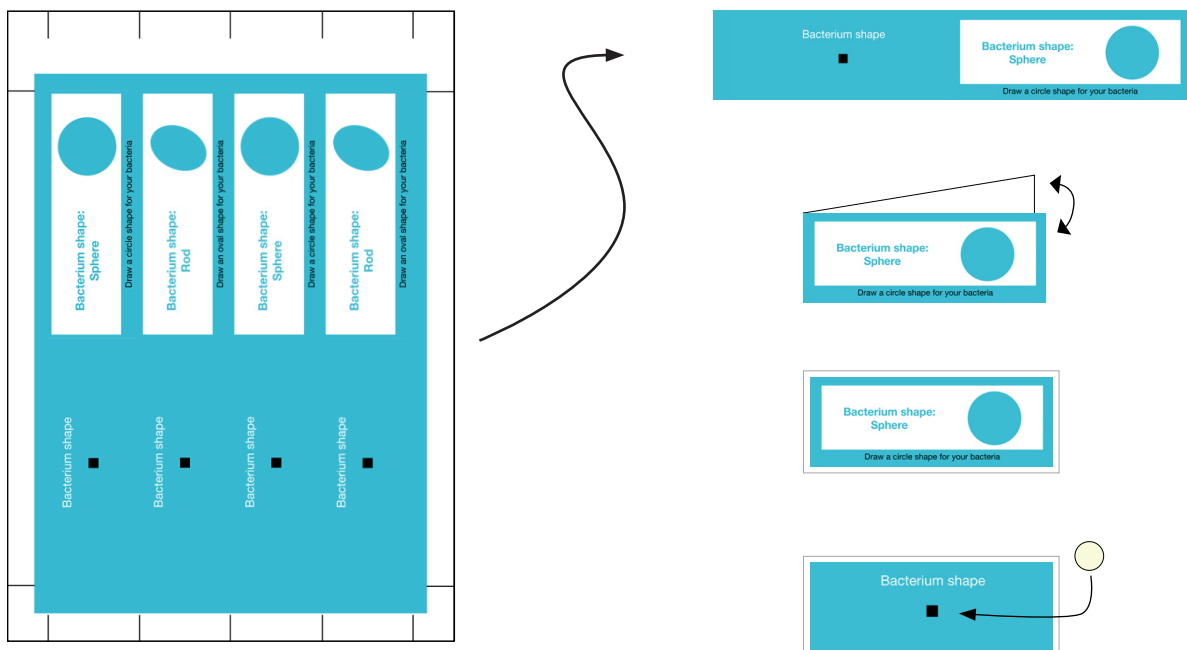


How to Assemble

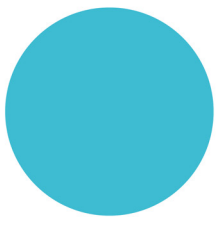
- Print the Gene Cards, for a group of up to 32 learners, print:
 - 8 x bacterium shapes page
 - 8 x bacterium cell wall page
 - 11 x how many bacteria? page
 - 11 x flagella location page
 - 13 x special features page
- Cut out the card stripes using the black guide lines at the edge of the page
- Fold each Gene Card in half, with the instructions and illustration on one side, and the title and blue tac/velcro marker on the other
- Stick together or laminate the folded Cards
- Add velcro or blue tac to the black box on the title side
- If using velcro, add the opposite piece of velcro to the laminated worksheet in the centre of the coloured boxes



Bacterium shape



Bacterium shape:
Sphere

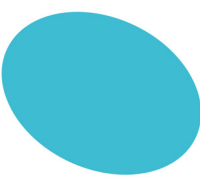


Draw a circle shape for your bacteria

Bacterium shape



Bacterium shape:
Rod

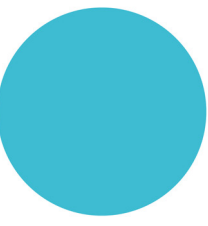


Draw an oval shape for your bacteria

Bacterium shape



Bacterium shape:
Sphere

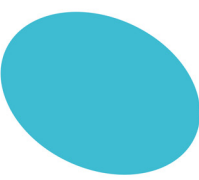


Draw a circle shape for your bacteria

Bacterium shape



Bacterium shape:
Rod



Draw an oval shape for your bacteria

Bacterium cell wall



**Bacterium cell wall:
Gram negative**

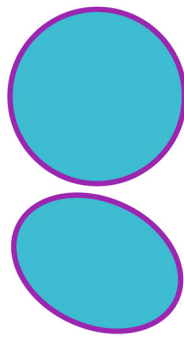


Don't add a border to your bacteria

Bacterium cell wall



**Bacterium cell wall:
Gram positive**



Add a purple border to your bacteria

Bacterium cell wall



**Bacterium cell wall:
Gram negative**

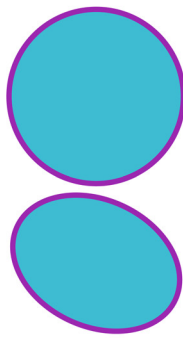


Don't add a border to your bacteria

Bacterium cell wall



**Bacterium cell wall:
Gram positive**

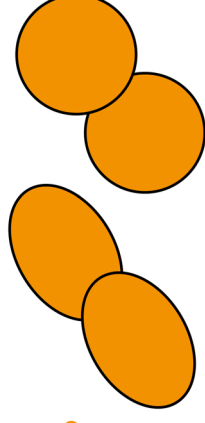


Add a purple border to your bacteria

How many bacterium?



How many bacteria?
Chain of 2

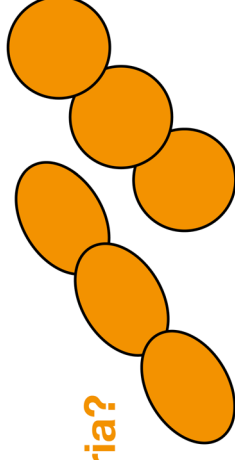


Make two of your bacteria shapes (and any borders)

How many bacterium?



How many bacteria?
Chain of 3

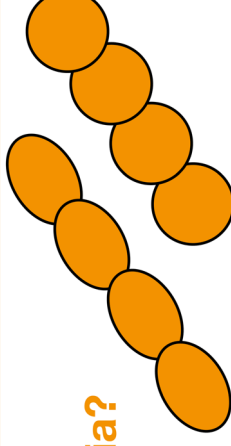


Make three of your bacteria shapes (and any borders)

How many bacterium?

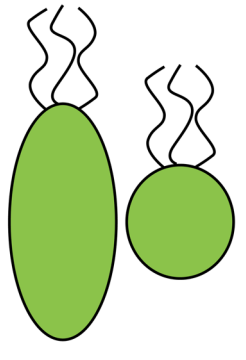


How many bacteria?
Chain of 4



Make four of your bacteria shapes (and any borders)

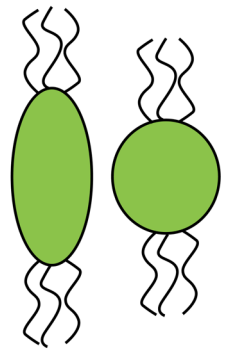
Flagella location



**Flagella location:
At one end**

Add some pieces of string to one end of your bacteria

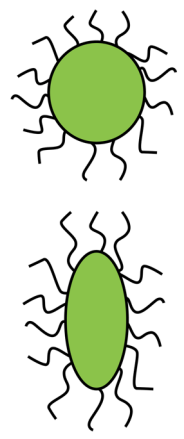
Flagella location



**Flagella location:
At two ends**

Add some pieces of string to two ends of your bacteria

Flagella location



**Flagella location:
All around**

Add some pieces of string all around your bacteria

Special Feature



Special Feature:
Toxin release

Add  to your
bacteria

Special Feature



Special Feature:
Pili

Add  to your
bacteria

Special Feature



Special Feature:
Immunity evader protein

Add  to your
bacteria

Special Feature



Special Feature:
Immune response trigger

Add  to your
bacteria

Special Feature



Special Feature:
Cell wall support

Add  to your
bacteria